



METAL ROOFING  
SHAKE AND SLATE



---

# METAL ROOFING

---

SHAKE AND SLATE

---



## TABLE OF CONTENTS

A CLASSIC REFRESH .....	2-3
THE SWITCH TO METAL ROOFING .....	4
GALVATEC™ FINISH SYSTEM .....	5
PRODUCT FEATURES .....	6-7
TOP 6 REASONS .....	8-9
COLORS .....	10-15
ROOF SYSTEM & VENTILATION .....	16-17
TRIMS & FLASHINGS .....	18-19
ENVIRONMENT & COOL ROOF .....	20-21
STANDARDS & CERTIFICATIONS .....	22
PROVIA PRODUCT PORTFOLIO .....	23-25



On Cover: Shadewood Shake

# PROTECTING WHAT YOU VALUE MOST

ProVia® welcomes you home with our latest inspiration, a metal roofing system with an all-new way to:

- **Rethink** the worn and forgotten roof
- **Refresh** your home's total curb appeal
- **Reroof** with finishes and materials designed to last

---

## MANUFACTURING METAL ROOFING THE PROFESSIONAL WAY

ProVia has developed a competitive position by catering to a niche within the metal roofing market that demands a high degree of aesthetic performance, longevity and installation integrity. Our company defines the products that meet this standard as "professional-class."

## WE SERVE BY CARING FOR DETAILS IN WAYS OTHERS WON'T

We have found success by adhering to a core set of values that guide us as we develop rewarding long-term relationships with our employees, customers and homeowners. If you ask around, you'll find attention to detail is what our customers have come to appreciate and expect from the ProVia brand.

## IT HAS LED US TO EXACTING STANDARDS

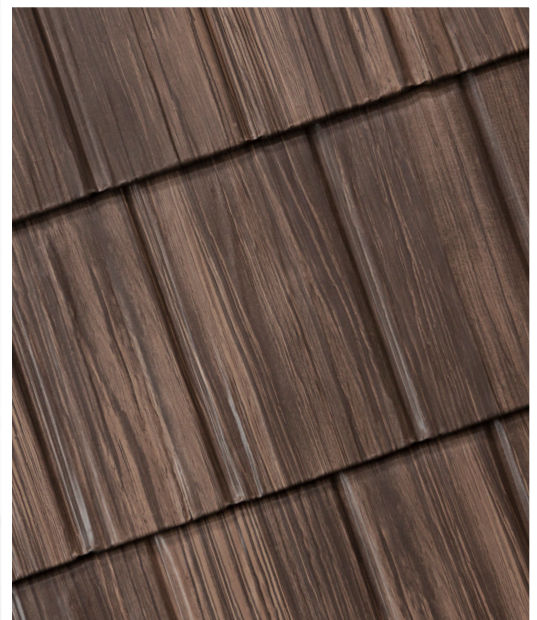
We feel so strongly about the performance and installer workmanship of our metal roofing system that it's backed by a Lifetime Limited Warranty for as long as you own your home. The warranty is even transferrable to one subsequent owner. You can read all the details at [provia.com/warranty](http://provia.com/warranty).

We think you'll agree, every roof deserves this unconditional care.

We're building your roof to last a lifetime – that's  
**THE PROFESSIONAL WAY.**

**PEACE-OF-MIND**

**LIFETIME**  
LIMITED WARRANTY



# A CLASSIC REFRESH

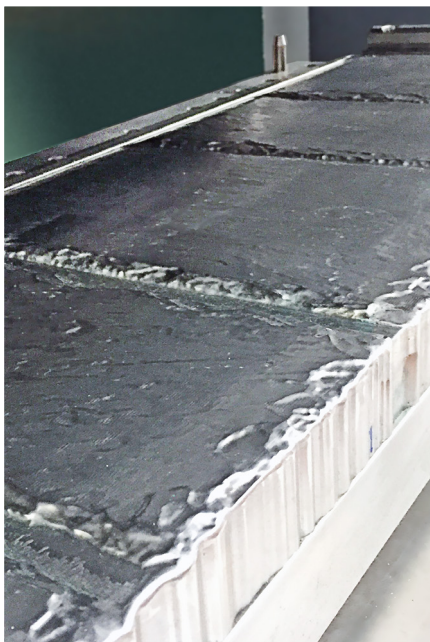
## WE DESIGNED OUR METAL ROOFING COLLECTION SO YOU CAN MAKE IT YOURS

Two classic yet distinctive styles to complement your home's architecture - **SHAKE AND SLATE**.



### A TWIST ON TRADITION

Preserving the unique characteristics of traditional roofing materials, every intricate detail of ProVia's roofing designs were hand-selected and cast from time-honored elements into one-of-a-kind profiles, resulting in nature-inspired finishes with authentic appeal.





# THE SWITCH TO METAL ROOFING

WHEN YOU INVEST IN DISTINCTIVE METAL, YOU'LL APPRECIATE KNOWING WE SELECTED THE HIGHEST QUALITY FOR LONG-TERM PERFORMANCE

**30% THICKER**  
**GALVANIZED STEEL**  
COMPARED TO OTHER  
METAL ROOFING PRODUCTS

---

**YET, UP TO 3X LIGHTER**  
THAN ASPHALT SHINGLES

WITH  
FACTORY  
APPLIED

**GalvaTec**<sup>TM</sup>

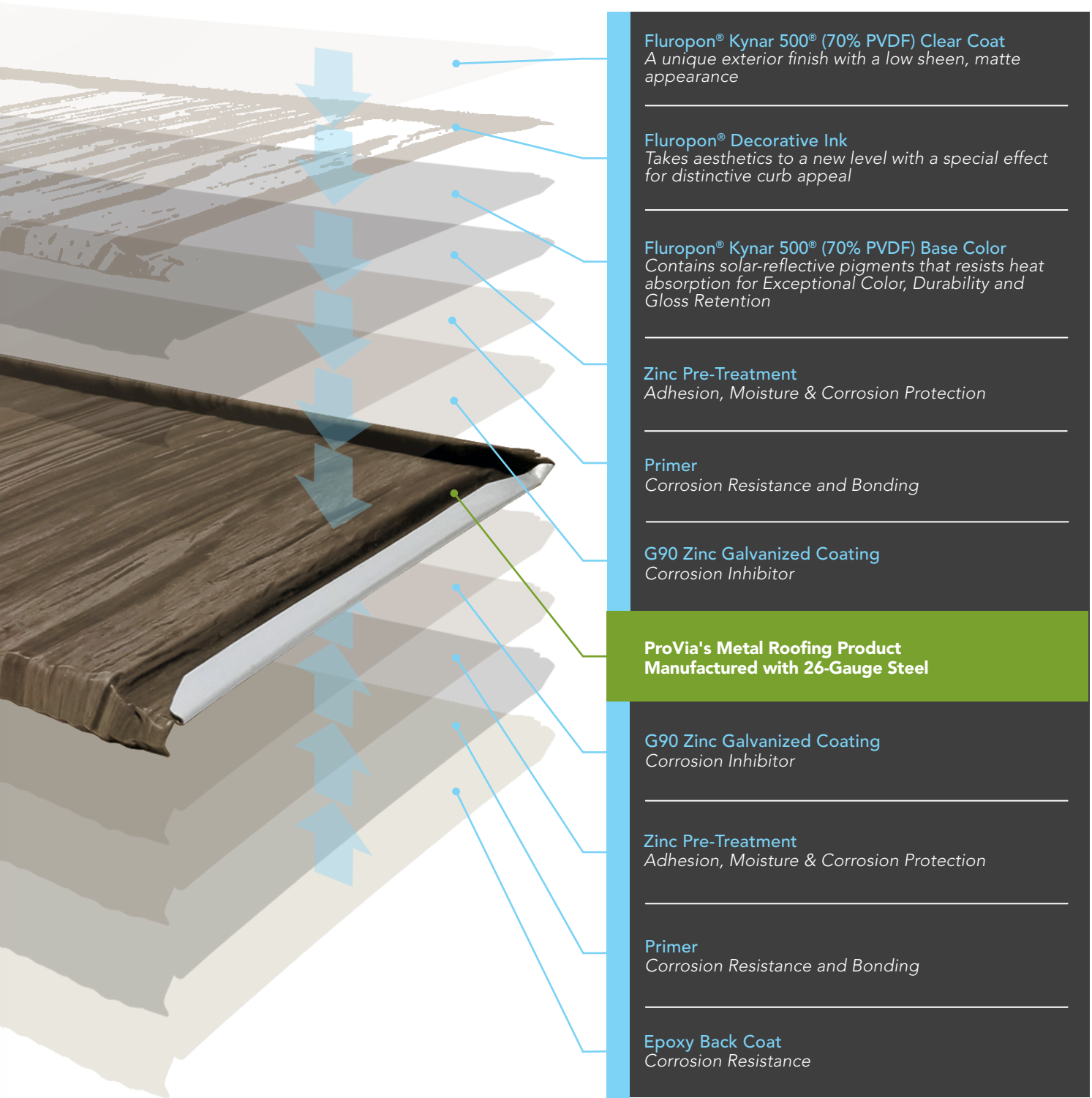
This premium architectural coating is field- and time-proven to meet or exceed the most rigorous ASTM performance standards – including UV protection against chalking and weathering, offering long-lasting beauty and durability for as long as you own your home.

# MORE PROTECTION

## FACTORY-APPLIED TO 26-GAUGE GALVANIZED STEEL

ProVia's exclusive **GalvaTec™** finish system raises the benchmark for **true-to-life aesthetics** and the **enduring performance** demanded by today's most discerning consumer.

ProVia Metal Roofing is coated on both sides for added protection against the elements.



**Fluropon® Kynar 500® (70% PVDF) Clear Coat**  
*A unique exterior finish with a low sheen, matte appearance*

**Fluropon® Decorative Ink**  
*Takes aesthetics to a new level with a special effect for distinctive curb appeal*

**Fluropon® Kynar 500® (70% PVDF) Base Color**  
*Contains solar-reflective pigments that resists heat absorption for Exceptional Color, Durability and Gloss Retention*

**Zinc Pre-Treatment**  
*Adhesion, Moisture & Corrosion Protection*

**Primer**  
*Corrosion Resistance and Bonding*

**G90 Zinc Galvanized Coating**  
*Corrosion Inhibitor*

**ProVia's Metal Roofing Product**  
**Manufactured with 26-Gauge Steel**

**G90 Zinc Galvanized Coating**  
*Corrosion Inhibitor*

**Zinc Pre-Treatment**  
*Adhesion, Moisture & Corrosion Protection*

**Primer**  
*Corrosion Resistance and Bonding*

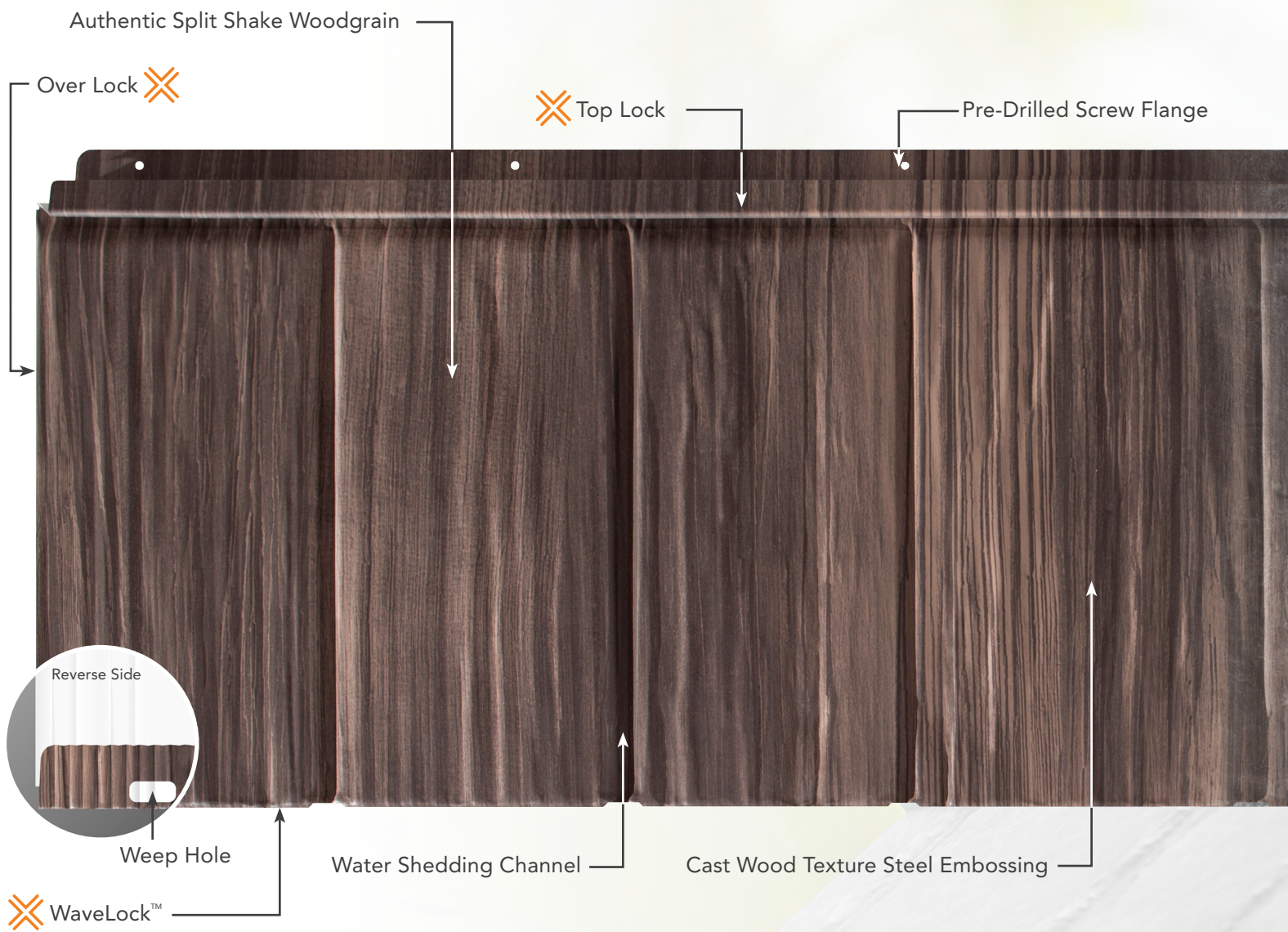
**Epoxy Back Coat**  
*Corrosion Resistance*

# TEXTURE YOU CAN SEE AND FEEL

## WE'VE GIVEN OUR ATTENTION TO EVERY DETAIL

Tens of thousands of surface impressions and an extensive range of variegated texture make up the unrivaled characteristics of each Shake and Slate panel.

A state-of-the-art steel-embossing process defines panel texture you can actually feel – adding strength to its form, while realistic hues accentuate the authentic look of hand-split wood shake or quarried slate.



## ENGINEERED TO PERFORM

Roofing products are laboratory-tested in three classes for Wind Uplift – 30, 60 and 90. Achieving a Class 90 rating requires that roofing panels remain securely fastened to a roof deck to a point of 180mph.



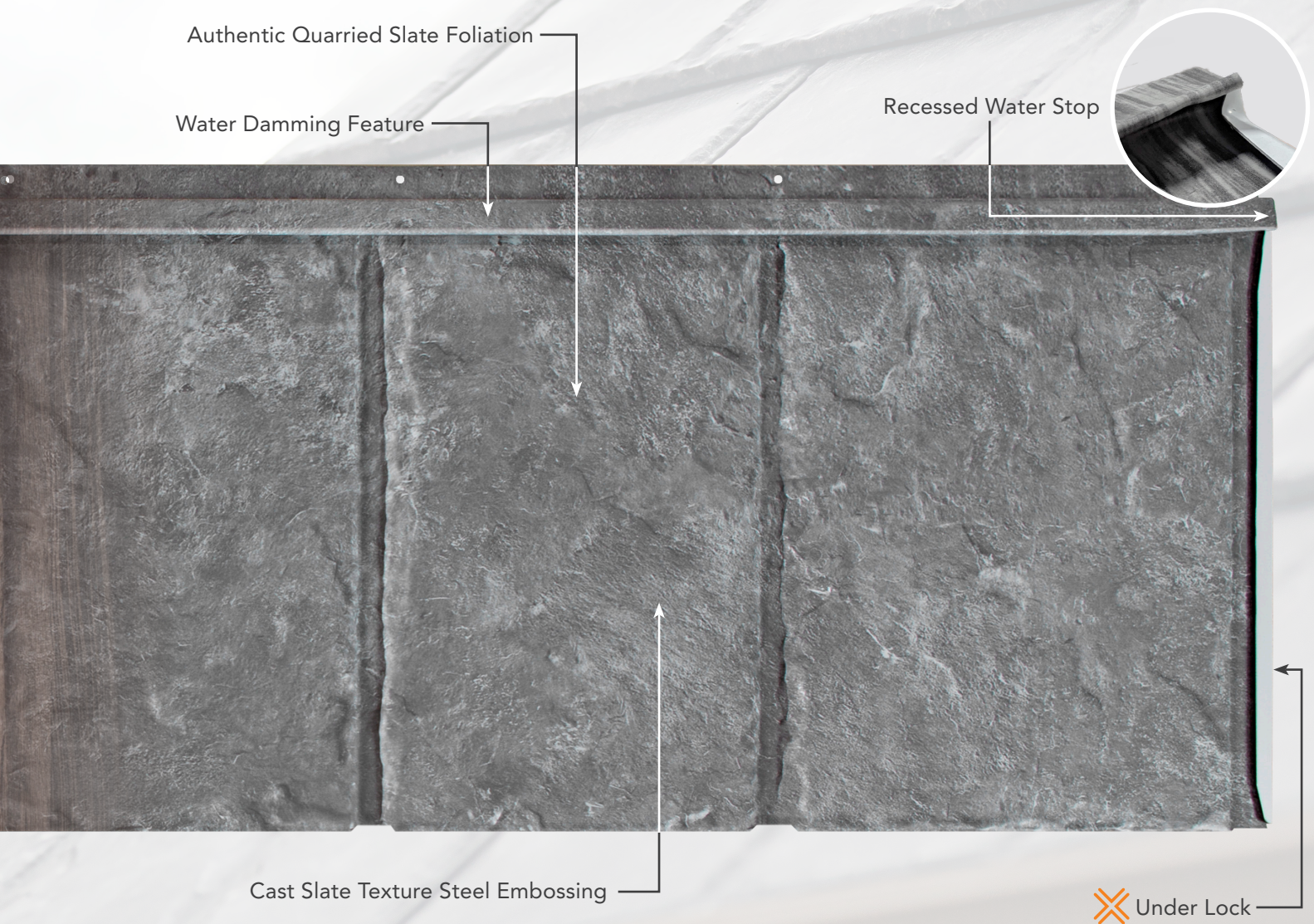
# PRODUCT FEATURES

An exclusive, 4-way multi-point locking system provides the essential blueprint that gives ProVia's metal roofing system its long-standing performance, standing up to even the most extreme environmental conditions.

## 4-WAY MULTI-POINT LOCKING SYSTEM

This form-fit, panelized system is design-engineered to provide:

- Edge-to-edge secure panel placement and field anchoring
- Defense against wind-uplift at speeds up to 180mph\*
- An ultimate barrier system for shedding the forces of sheeting rain
- Reverse-side WaveLock™ design for increased panel strength



## DID YOU KNOW?

ProVia's four-way interlocking panel system and fastening methods exceeded this requirement, reaching \*180mph – even surpassing Class 5 Hurricane winds. **Find all of ProVia's Test Ratings on pg. 22.**

# THE TOP 6 REASONS

## YOUR NEXT ROOF SHOULD BE A METAL ROOF

### Benefits of a Metal Roof by ProVia

#### 1 LONG-TERM VALUE

- **Longevity** – An extensive lifespan, resulting in the last roof you'll ever need to purchase
- **Cool Roof Technology** – Solar reflective pigments can improve indoor comfort and contribute to reduced energy consumption during warmer months
- **Improved Resale Value** – Recognized as an attractive home improvement upgrade
- A ProVia metal roof can reduce your homeowners insurance premiums

#### 2 PROTECTION

- **Strength & Durability** – 26-gauge steel, design-engineered with WaveLock™ feature for superior post-forming performance
- **Third-Party Tested** for Hail, Wind, Rain, Corrosion and Tensile Strength, meeting or exceeding stringent ASTM and UL industry standards

#### 3 WARRANTY

- **Lifetime non pro-rated warranty** on material defect for original homeowner.
- **40 Year** chalk and fade guarantee.
- Warranty is transferrable.
- **Certified Installers** are trained by ProVia experts, a key to long-term performance.

#### 4 CURB APPEAL

- **Enhanced Aesthetics** – Uniquely designed with natural characteristics of traditional shake or slate materials
- **Distinctive Style** – Complements any neighborhood, adding focus to architectural design
- **Fade & Chalk Resistant** – Outstanding color retention and protection against damaging UV rays

#### 5 LOW MAINTENANCE

- **Built-In Resistance** – Exclusive GalvaTec™ Finish System contributes to exceptional dirt, mildew and stain protection
- **Ongoing Peace-of-Mind** – Material degradation is virtually non-existent as compared to natural or stone-coated products

#### 6 ENVIRONMENTAL STEWARDSHIP

- **Energy-efficiency** contributes to low utility costs
- **American-manufactured** with domestic, recycled steel
- **100% recyclable**

# A REFRESHING VIEW

## BUILT-IN RESISTANCE

Your roof deserves to stay beautiful, so we've designed one to last the test of time. Carefree maintenance and enduring beauty is what you can expect from ProVia's premium, GalvaTec factory-finish, well-suited for high-end residential and commercial architecture.



### DID YOU KNOW?

The hardened, resin-based surface of ProVia's **GalvaTec** finish system inherently protects against unsightly algae formation and black streaks prevalent to granular and porous roofing materials like traditional asphalt, slate and wood shake. The surface is so durable it's even graffiti resistant.

With a metal roof, you'll retain everlasting color and beauty.

# WE'RE YOUR PERFECT MATCH

## MAKE A STATEMENT IN NATURE'S COLORS

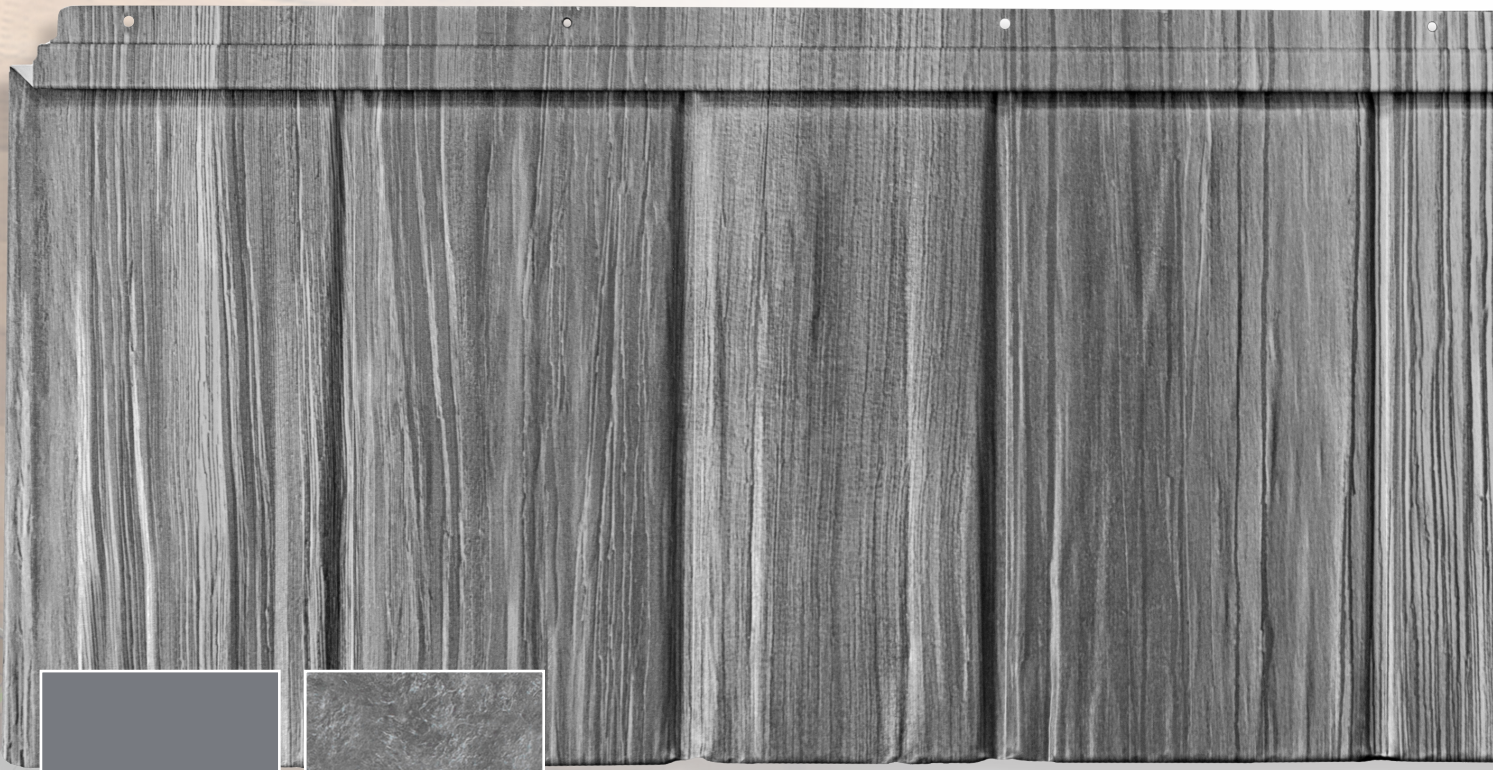
The modern appeal of lifetime metal roofing finds its match here – where enduring protection meets the subtle influences of nature to complement any neighborhood, and adds focal distinction to architectural design.

Achieving popularity in exterior home design, an architectural-grade metal roofing finish system, with its superior color retention technology, is recognized as an attractive home improvement upgrade.

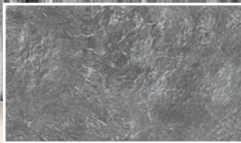


# SHAKE

## PANEL COLORS



Pepper/Iron  
Solid Trim

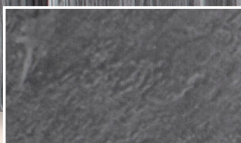


Pepper/Iron  
Decorative Trim

PEPPERWOOD



Shade  
Solid Trim



Shade  
Decorative Trim

SHADEWOOD

# SHAKE

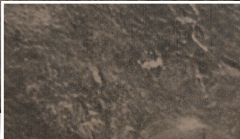
## PANEL COLORS



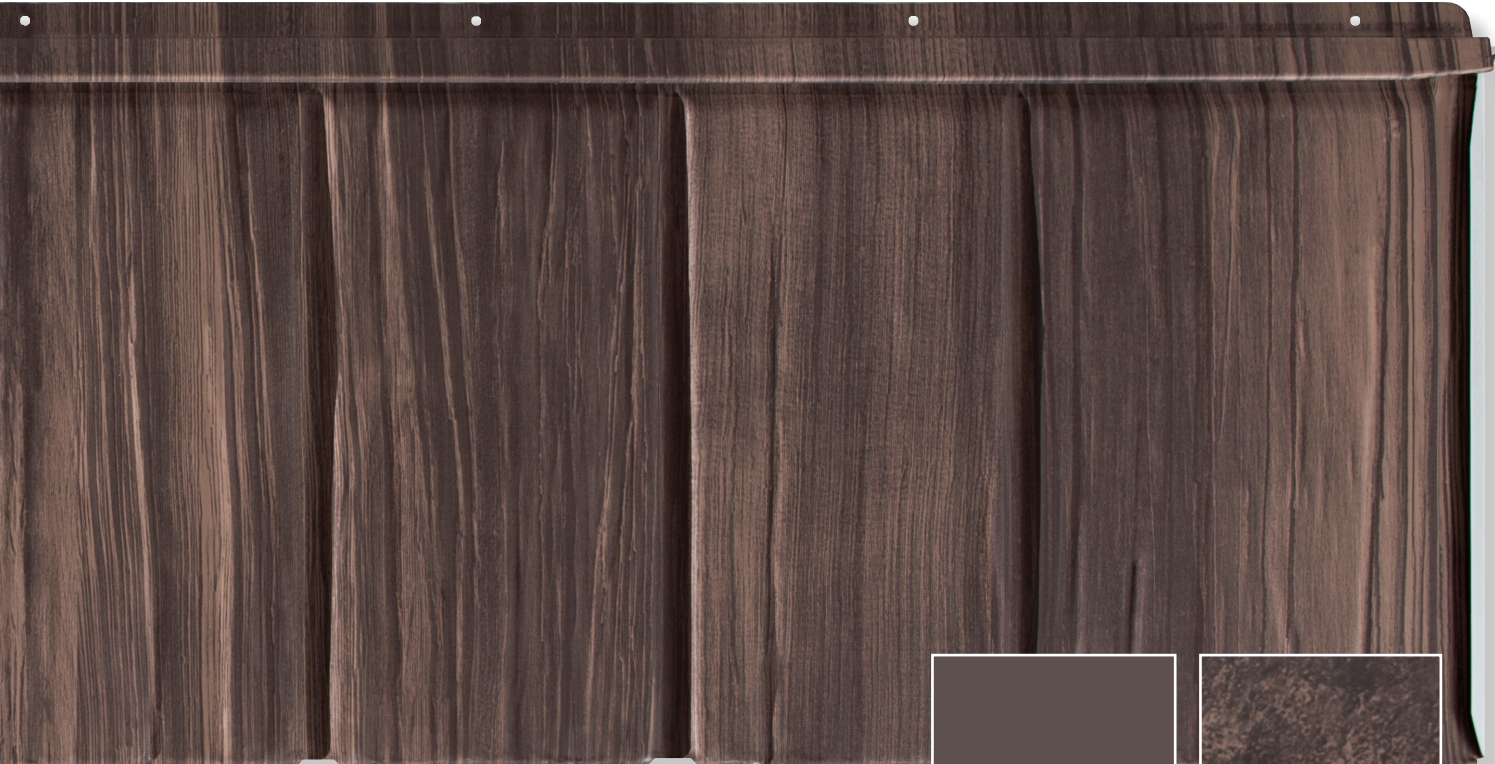
BRIARWOOD



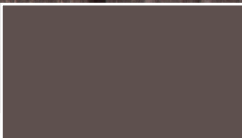
Briar/Lodge  
Solid Trim



Briar  
Decorative Trim



SADDLEWOOD



Saddle  
Solid Trim



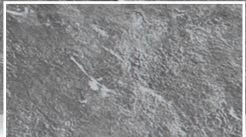
Saddle  
Decorative Trim

# SLATE

PANEL COLORS

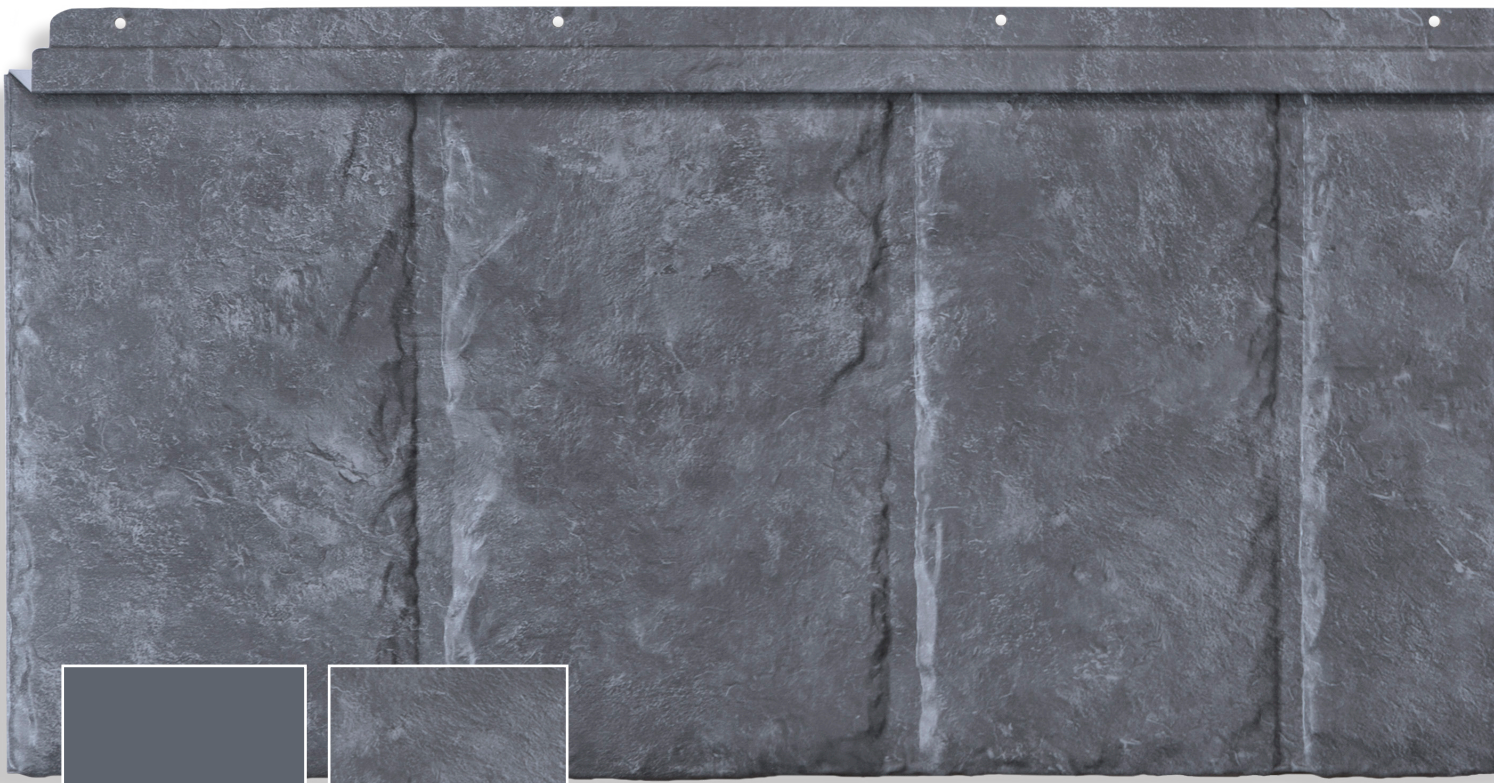


Pepper/Iron  
Solid Trim



Pepper/Iron  
Decorative Trim

IRONSTONE



Bay  
Solid Trim



Bay  
Decorative Trim

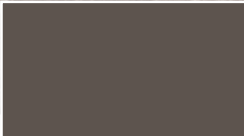
BAYSTONE

# SLATE

## PANEL COLORS



LARKSTONE



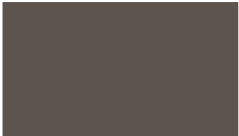
Lark  
Solid Trim



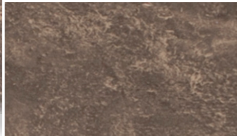
Lark  
Decorative Trim



LODGESTONE



Briar/Lodge  
Solid Trim



Lodge  
Decorative Trim

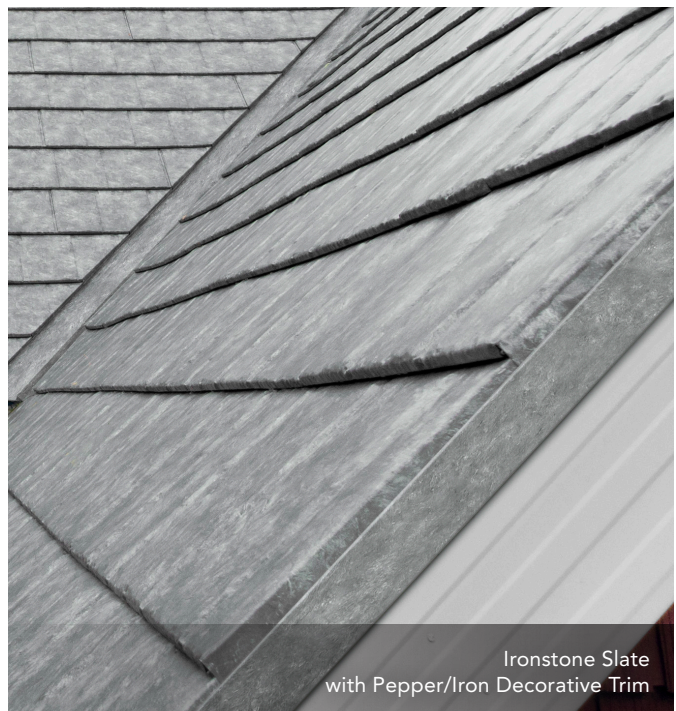


# TRIM ACCENTS

## COLORS



Architectural design and personal style are key factors that influence the ultimate curb appeal of your metal roof. Choose from coordinating solid or decorative trim colors to achieve the desired level of contrast and a resulting finish that fits your style.



The attractive profile of ProVia's shake and slate, combined with refined rake and valley trims, provide a final edge-to-edge finish for a distinctly pristine appearance.

# THE ROOF SYSTEM

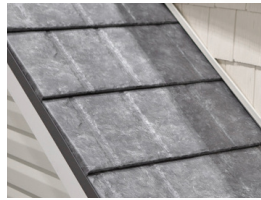
A TOTAL-DEFENSE SOLUTION



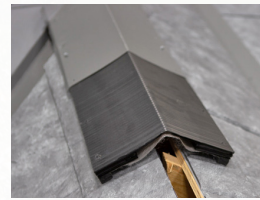
Ice & Water Shield



Underlayment



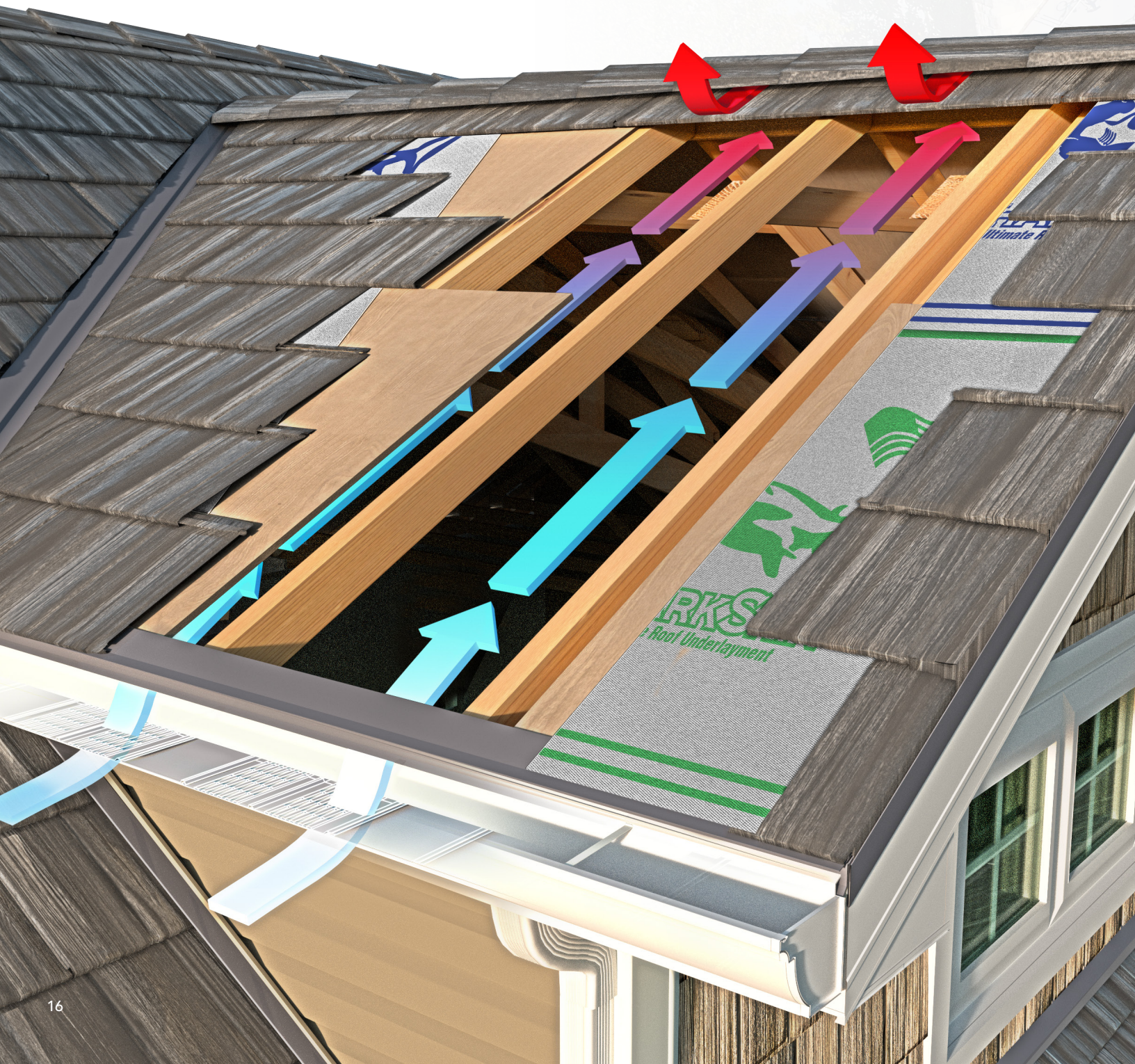
Roof Panel



Ridge Vent/Base



Ridge Cap



# PROTECTING UP TO 60% OF YOUR HOME'S EXTERIOR SURFACE, THE CRUCIAL ROLE OF THE ROOF TO PROTECT, CANNOT BE UNDERVALUED

That's why **ProVia's Installer Certification Program (ICP)** is at the forefront of every warranted system. The Certified Installer distinction is added assurance that your contractor has acquired hands-on skill training of ProVia-specific tools and application techniques, and is knowledgeable on the value each component contributes to the total system's long life and performance.

- Ice & Water Shield** Self-adhering underlayment used to prevent damage to the roof substrate caused by ice dams
- Underlayment** Water-resistant vapor barrier giving an extra layer of protection for the roof deck from condensation and severe weather
- Roof Panel** Steel panels created for high resistance to the elements while achieving optimum aesthetics
- Ridge Vent** Allows warm, humid air to escape the attic, increasing energy efficiency and prolonging the life of the roof
- Ridge Cap** Installed over the ridge vent system, an aesthetically-pleasing finish to the metal roof

## 3 WAYS PROPER ATTIC VENTILATION PROMOTES ALL-SEASON HEALTH AND COMFORT

### ALLEVIATES HEAT BUILDUP

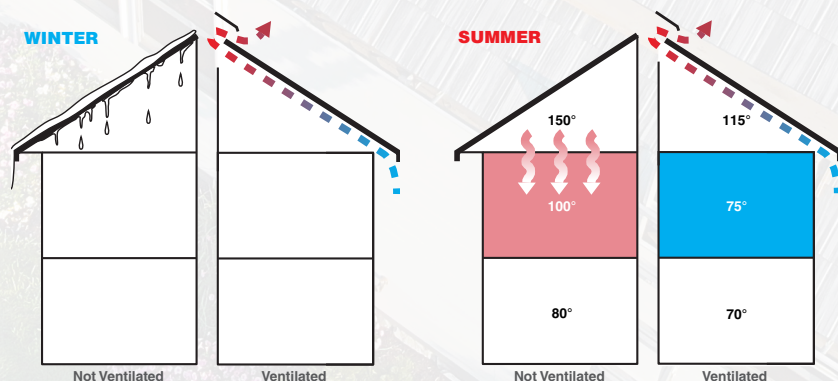
- Prevents indoor temperature extremes
- Aids in maintaining low energy costs
- Diminishes roof deterioration

### HELPS PREVENT MOISTURE ACCUMULATION

- Reduces condensation
- Minimizes risk of mold, mildew and fungus growth
- Lessens risk of wood rot

### REDUCES THE EFFECTS OF ICE DAMMING

- Ice Dams can occur when warm air from the living space reaches the attic and becomes trapped. This can allow the snow to melt on the roof deck and travel to the eaves, where it can freeze and backup – forcing its way under the shingle, causing a dam-like effect.
- Proper roof ventilation ideally keeps the attic at the same outside temperature, helping to prevent any snow from melting due to the interior temperature of the home.

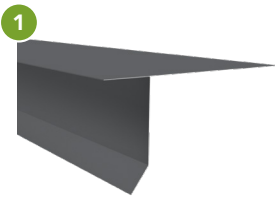


# FINISHING TRIMS & FLASHINGS

## OFTEN OVERLOOKED, THESE SYSTEM COMPONENTS PROVIDE THE ANCHOR TO PERFORMANCE AND REFINEMENT

It's true, that often what you can't see is what's most important. The essential role of unexposed roof flashing is to protect against water infiltration and consequential damage. In simultaneous defense, roof trim components are precisely formed to anchor the overall system together and prevent uplift.

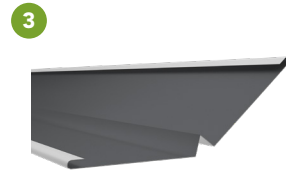
Components, especially exposed rake and valley trims, provide the final edge-to-edge fit-and-finish for a refined appearance.



Eave Starter



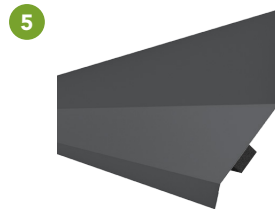
Rake



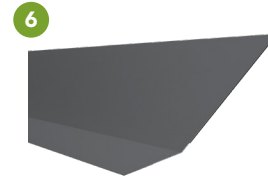
Valley



Sidewall



Apron



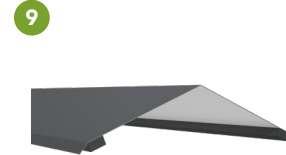
Anchor Cleat



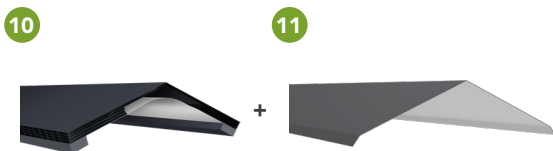
6" Underpan



20" Underpan  
Used for vent pipes, bathroom vents, etc.  
Not shown on illustration.



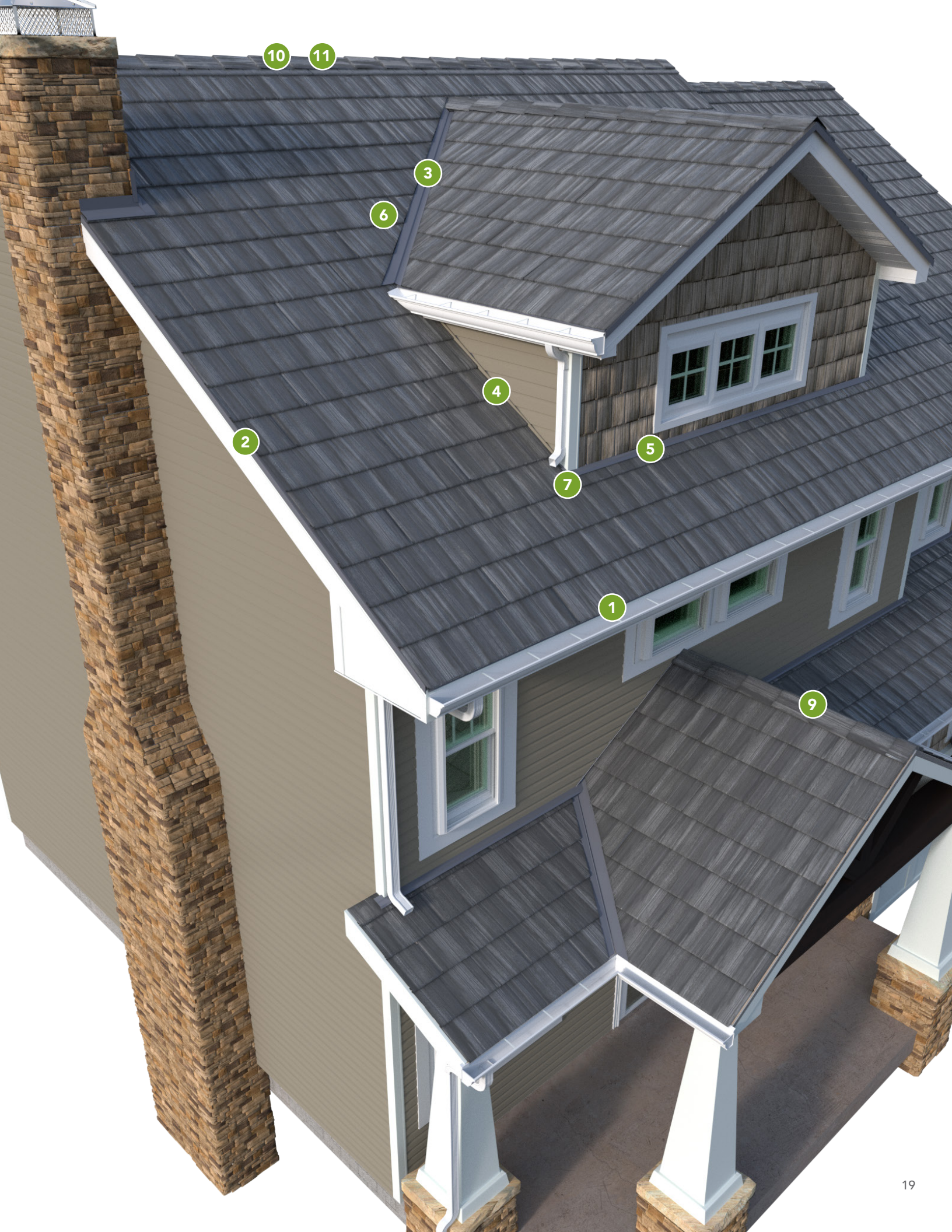
Ridge/Hip Base  
For Non-Vented Installations



Quarrix Ridge Vent with Ridge Base  
For Vented Installations

### FINISHING TOUCH

- Lifetime Ultimate® Pipe Flashing
- Color-Matched Sealant
- Coordinating ProGrip™ Snow Diverters



10

11

3

6

2

4

5

7

1

9

# A NATURALLY RESPONSIBLE CHOICE

## REDUCE. REUSE. RECYCLE.

Metal is highly regarded as the natural choice for sustaining environmental resources.



AMERICAN-MANUFACTURED  
WITH DOMESTIC  
RECYCLED STEEL

100%  
RECYCLABLE

Your education...  
...is our  
future

**LIFE SPAN**

**LIFETIME METAL ROOF**

THE LAST ROOF YOU'LL EVER BUY

10+ YEARS 10+ YEARS 10+ YEARS 10+ YEARS   
RECURRING NON-METAL ROOF REPLACEMENTS

### DID YOU KNOW?

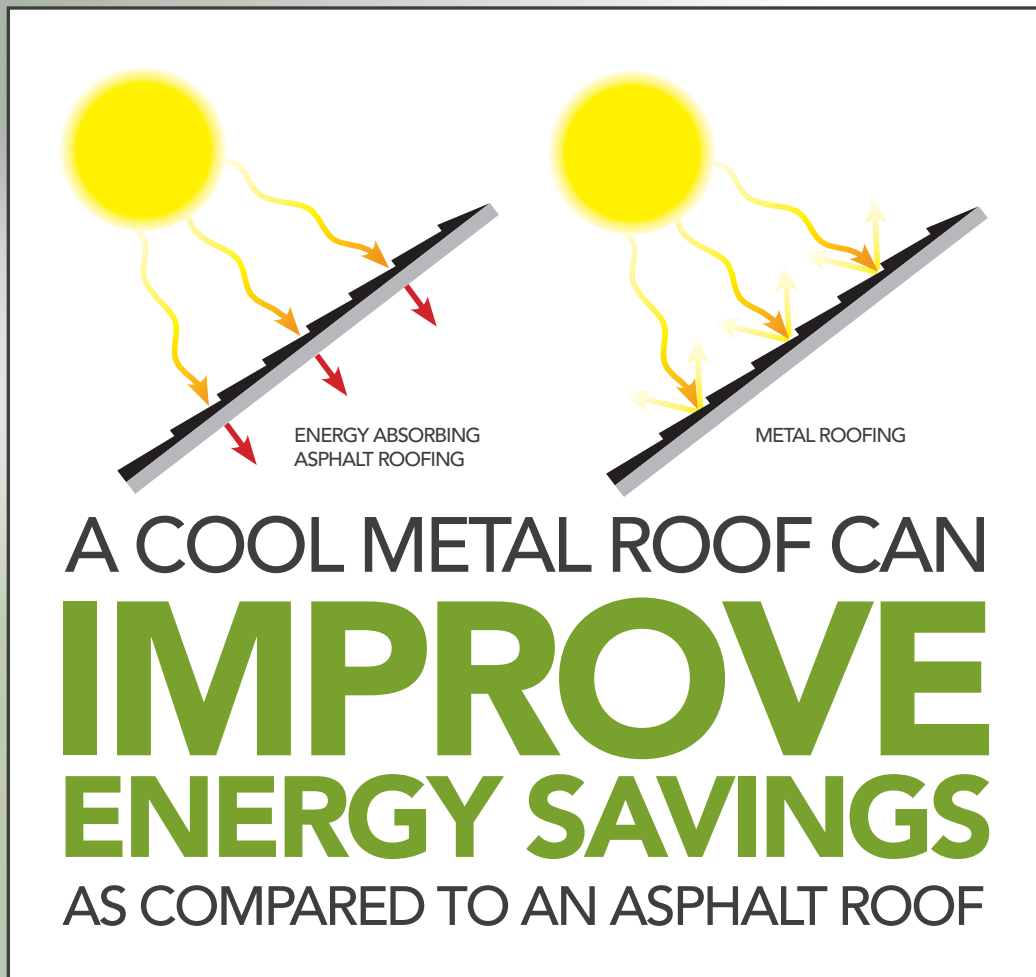
Every year, by recycling steel, the United States saves enough energy to supply the city of Los Angeles, CA with nearly 10 years worth of electricity.

Source: Recycle USA | [recycleusainc.com](http://recycleusainc.com)

# LASTING SOLAR DEFENSE

## IMPROVING YOUR HOME ENERGY SAVINGS

A cool metal roof is determined by the application of a specially-formulated reflective coating, which can reduce energy consumption and contribute to air conditioning cost savings, improving indoor comfort during warmer months.



ProVia's **GalvaTec™** system provides a highly reflective and highly emissive factory-coated finish, which is optimal for reducing energy consumption and re-emitting absorbed solar radiation.

# STANDARDS & CERTIFICATIONS

## ACCREDITATION AND TESTING

ProVia's metal roofing products are voluntarily third-party tested and certified, and meet or exceed stringent industry standards.

### Pre-Finished, Shake and Slate

TEST TYPE	STANDARD	RATING
Wind Uplift	TAS 125      7 Fasteners - 180mph	Class 90
	TAS 125-03      5 Fasteners - 160mph	Class 60
	UL 580      4 Fasteners - 120mph	Class 30
Impact Resistance	UL 2218	Class 4
Corrosion Resistance	ASTM B117	Pass
Weather Resistance	ASTM G-154	Pass
Wind-Driven Rain	TAS 100-95	Pass
Foot Traffic Resistance	ANSI-FM4470 (2016)	Pass
Tensile Strength	ASTM E8/E8M-16a	Pass
Florida-HVHZ (Shake)	FL# 37381	Pass
Florida-HVHZ (Slate)	FL# 37870	Pass



Each of ProVia's metal roofing panel colors have been rated for solar reflectance, and these values are listed by the Cool Roof Rating Council (CRRC) at [coolroofs.org](http://coolroofs.org).

The CRRC was created in 1998 to develop accurate and credible methods for evaluating and labeling the solar reflectance and thermal emittance (radiative properties) for roofing products, to support research, and serve as an educational resource for information on roofing.



ProVia is a proud member of the Metal Roofing Alliance (MRA), which is the leading voice for companies and professionals involved in the residential metal roofing industry. An affiliate organization of the Metal Construction Association, the MRA is dedicated to helping homeowners make educated roofing decisions and connecting them with expert metal roofing professionals. As such, we support advocacy in building code and standards arenas, quality materials, installation and design using metal roofing.

## PEACE-OF-MIND

### LIFETIME LIMITED WARRANTY

ProVia's metal roofing products are backed by an **industry-leading Lifetime Limited Warranty**. Visit [provia.com/warranty](http://provia.com/warranty) for more details.





Your Vision is  
Our Inspiration



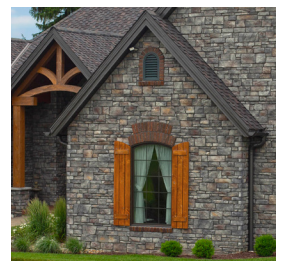
DOORS



WINDOWS



SIDING



STONE

[provia.com](http://provia.com)

ROOFING

# CREATE YOUR DREAM HOME

## WITH PROVIA'S EXTERIOR HOME DESIGN TOOLS

Find inspiration for the exterior of your home.  
Download ProVia's free app for iPad or try the online Visualizer at [provia.com/visualizer](http://provia.com/visualizer).



### PROVIA VISUALIZER

Use ProVia's Visualizer to change the colors and styles of your home's doors, windows, siding, stone and roofing.

Let your imagination run free with this exterior home design tool. Select from a library of existing home styles, choosing one to match yours, or upload a photo of your own home.

In a few easy steps, update your siding color, add manufactured stone or metal roofing, give the windows a fresh look or personalize a new entry door.

Not sure where to start? Apply one of our pre-selected Designer Collections, then further customize the selections to reflect your own personal style.



### PROVIA APP

Use the ProVia app to configure doors and windows or select from an extensive collection of vinyl siding, manufactured stone and metal roofing styles.

#### FEATURES

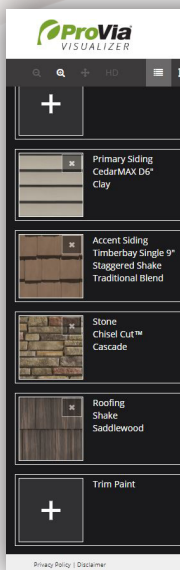
Door and Window Configurator

Vinyl Siding Profiles, Colors and Accessory Accents

Manufactured Stone Styles, Color Palettes and Grout Options

Metal Roofing Styles, Colors and Trim Accents

View Videos, Photo Galleries and Catalogs





Windows

Siding

Stone

Roofing

About Us



HOME SELECT SAMPLE HOME UPLOAD HOME CREATE ACCOUNT SIGN IN



# DESIGNER COLLECTIONS

HOME EXTERIOR PORTFOLIO

DOORS • WINDOWS • SIDING • STONE • ROOFING



"To serve, by caring for details in ways others won't." It's not just our mission, but a way of letting our light shine every day at ProVia. We continually strive to put these words into action by providing unmatched quality and service. The P-icon symbolizes each employee's commitment to devoting the utmost care, pride and quality into each building product we manufacture...**it's The Professional Way.**



DOORS | WINDOWS  
SIDING | STONE | ROOFING  
[provia.com](http://provia.com)

© 2023 ProVia  
R-MK-10100-23 | 3/23



[www.muellerinc.com](http://www.muellerinc.com)